

WARNING:

- 1.For pets only.
- 2.Do not leave pet in stroller unattended.
- 3.Always apply the brake whenever the stroller is stationary.
- 4.The maximum weight capacity is 33lbs.

Cleaning and maintenance:

- 1.Unsnap button on stroller;
- 2.Take apart the canopy;
- 3.Take out the cushion ;
- 4.Wipe stroller slightly.

Executive standard:

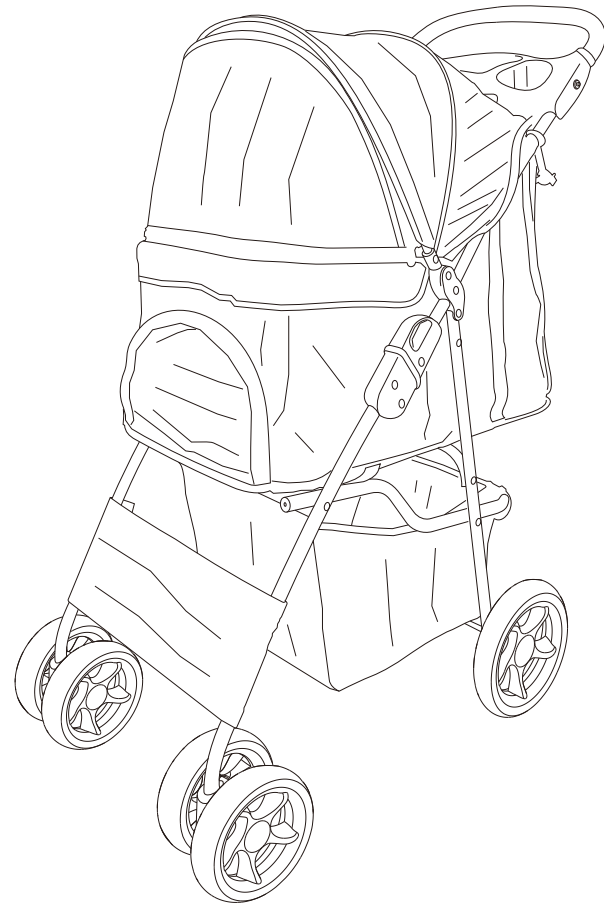
This pet stroller meets"Q/TB005-2016"standard.

Quality certificate:

This manufacturer has passed ISO9001:2008 certificate.

Pet Stroller

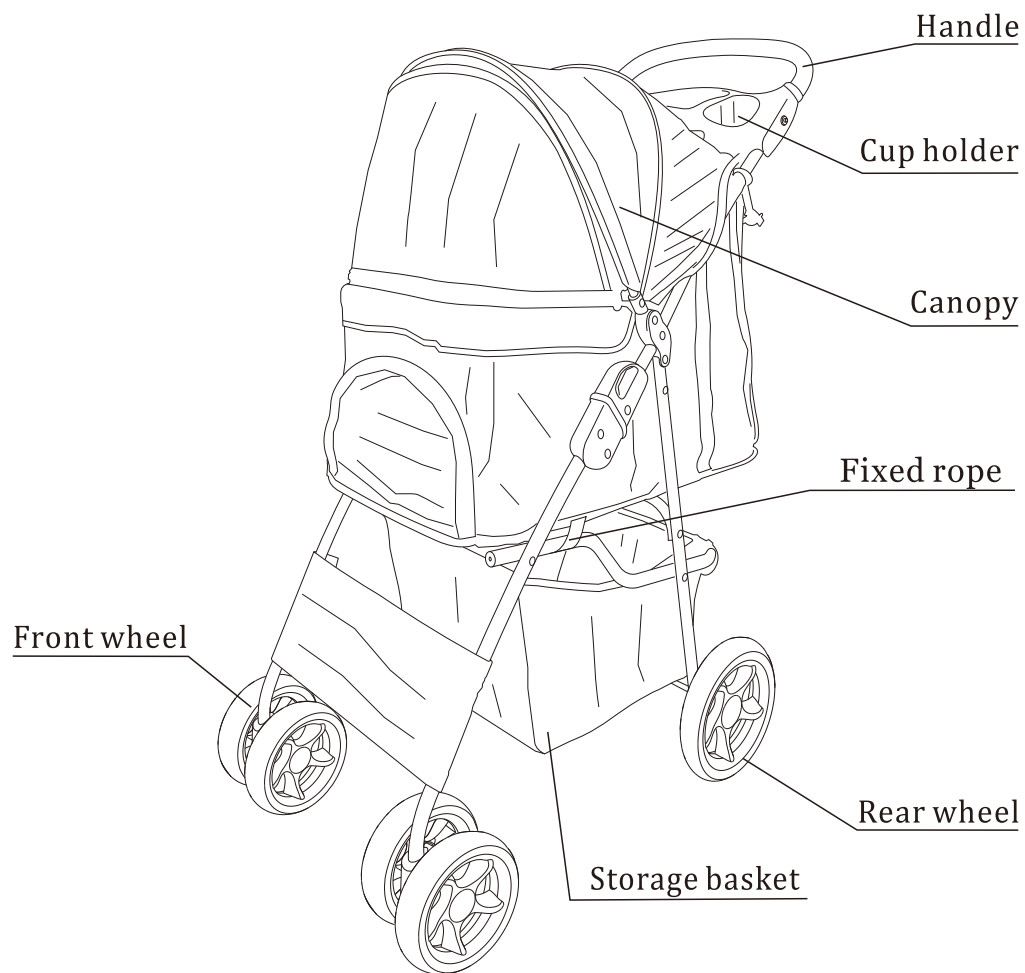
Instruction Manual



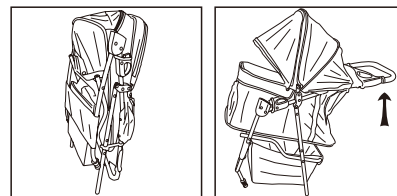
Warning:

Please make sure the stroller assemble correctly according to installation manual.

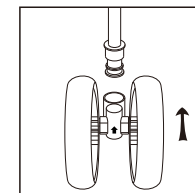
Component:



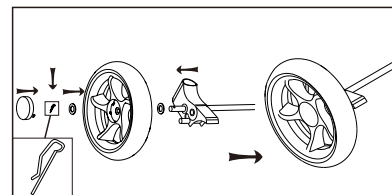
Open and Assemble:



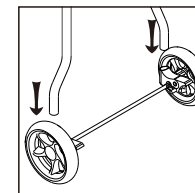
1. Release the red locking latch, unfold the stroller upwards and make sure both locks nap into place.



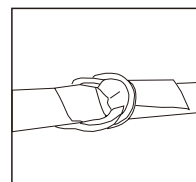
2. To install the front wheel, Follow the direction of the arrow, insert wheel onto the leg until a "click" is heard.



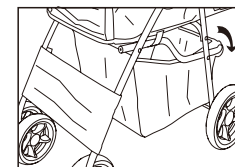
3. Insert a gasket first, then insert the rear wheel into the axle, attach the gasket to the axle, insert the pin into the hole as shown in the picture, and then cover the wheel cover.



4. Now attach the rear wheels on the rear legs and hear the "click" to secure.

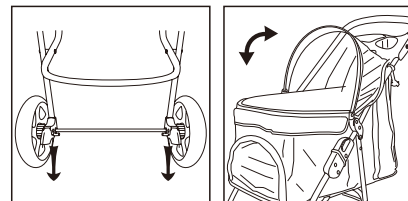


5. Get the fixed rope around the iron pipe and hold it as shown.



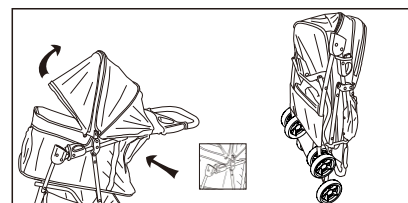
6. Hang the basket in front of the pet rack and use the magic stick on the back.

Function:



1. Brake: step the brake down to stop the stroller.
2. Canopy: open and fold canopy as picture shown.

Folding:



1. Fold the stroller: unzip the canopy window first, pull the latch on both sides and it will fold up automatically